

AIYA

ARCHITECTURE & INTERIORS

LONDON

DUBAI

MIAMI

LIMASSOL



## BUREAU

The AIYA team creates exclusive, sophisticated, timeless interiors. Through an exploration of materials, colours, forms, architecture and art, we add a wealth of experiences into every space. The most important is the balance between the designer's vision and the individuality of the client.

The bureau creates spaces that reflect the true values and lifestyle of our clients. We combine aesthetics and beauty with functionality. We work with natural and eco-friendly materials, prefer calm shades and integrate high-end technologies into our projects. We are passionate about art and work with the best art galleries in Moscow, London, Milan, Dubai and Cape Town.





The bureau was founded in 2013 and today there are more than 20 employees in the Moscow office and representatives in London, Dubai, Miami and an office in Limassol.

We practice team work on each project: architects, designers, project managers, assemblers.

The AIYA team cooperates with the best furniture designers, suppliers and galleries around the world. Each architectural project is unique. The interior is born from the co-creation of the team and our customers, together we create harmonious and unique projects.

The bureau takes on all the tasks related to the design, implementation and creation of the right atmosphere of the interior.

**LONDON - DUBAI - MIAMI - LIMASSOL**





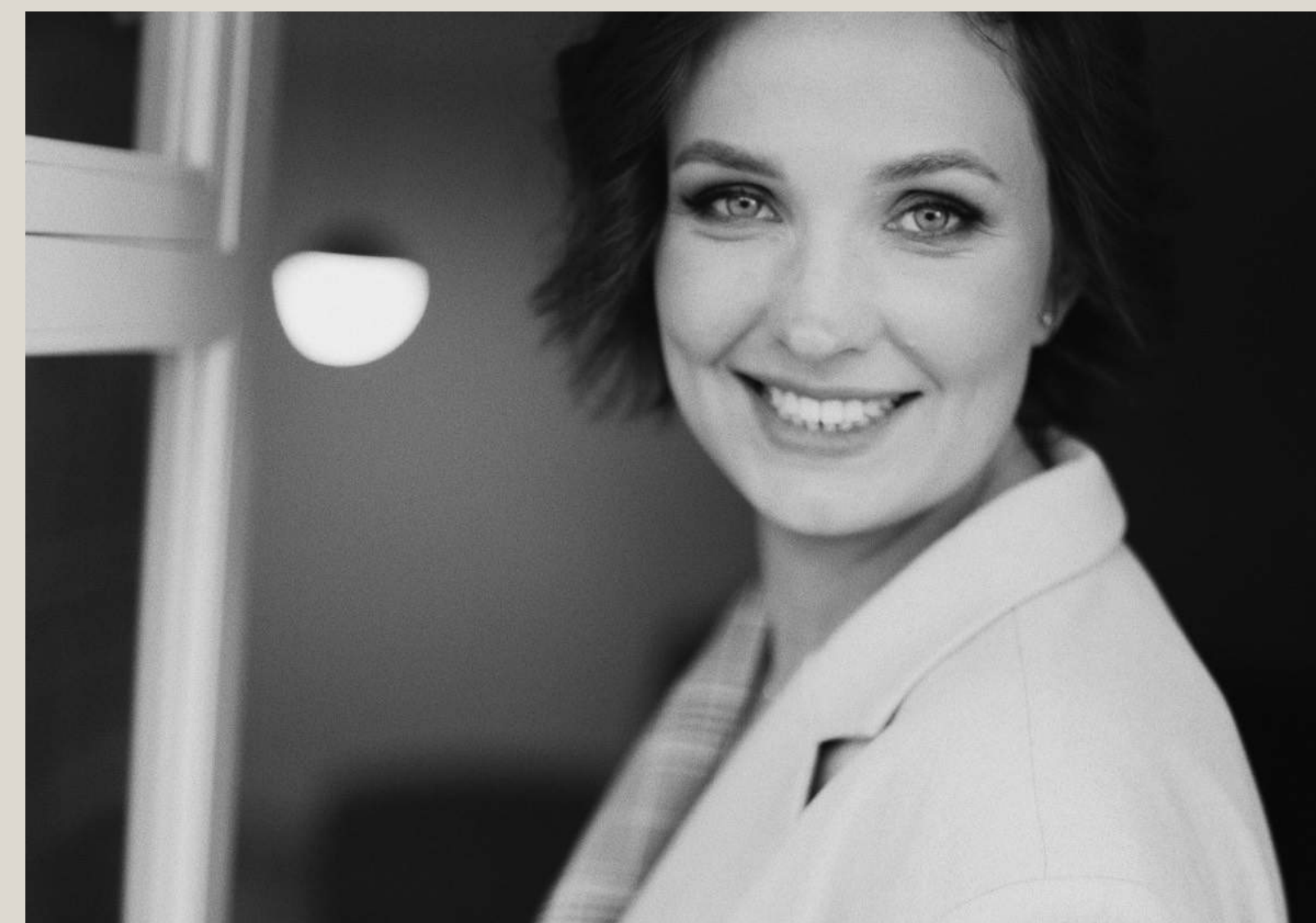


## AIYA LISOVA

FOUNDER & CREATIVE DIRECTOR

The bureau was founded by art historian and interior designer Aiya Lisova in 2013. Aiya is a visionnaire, she determines the development direction and style of the bureau, travels a lot in search of inspiration for projects, and promotes the bureau in the international market.

Graduated from M. V. Lomonosov Moscow State University, faculty of History of Arts, International Design School in Moscow, faculty of Interior Design, and Lyndall Fernie course at Chelsea College of Arts (London).



## ANNA MOSINA

MANAGING PARTNER

In 2016 economist Anna Mosina joined the team. She has a great experience in project management in international companies and her knowledge helped to build a strong team and take the company to the next level. Since 2021, Anna has become a managing partner and head of the bureau.

Anna is a speaker of AIYA class and other specialised events, holds master classes and seminars about management, management and finance in architecture and design.



# SERVICES

- 01 ARCHITECTURE
- 02 INTERIOR DESIGN
- 03 ARCHITECTURAL RENOVATION
- 04 B2B PROJECTS FOR DEVELOPERS
- 05 TURN-KEY PROJECTS
- 06 ART MANAGEMENT
- 07 CONSULTING



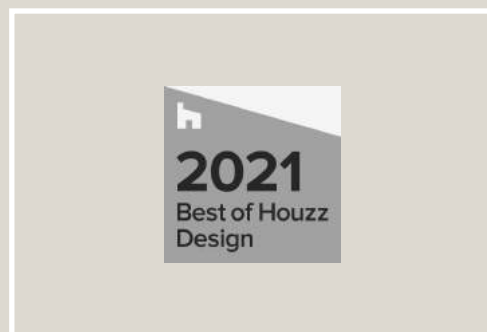
## PRIZES AND NOMINATIONS



AD TOP 50 IN RUSSIA



ELLE DECOR TOP 200



BEST OF HOUZZ



RUSSIAN PROJECT BY  
INTERIOR + DESIGN



APR IDD AWARDS



IDA DESIGN AWARDS



CSS DESIGN AWARDS



ARCHDAILY&STRELKA

## MEMBER OF ASSOCIATIONS



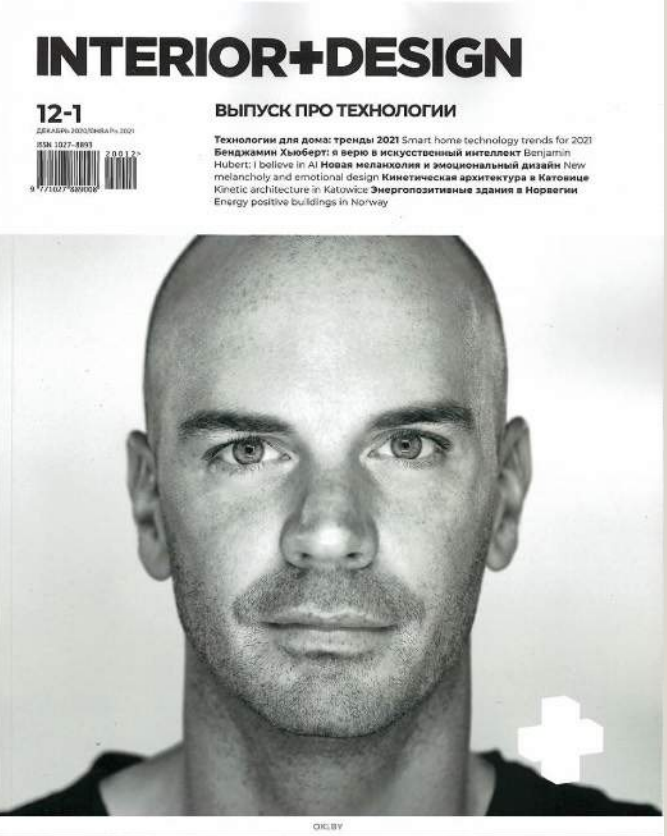
SBID ACCREDITED  
DESIGNER



HOUSE & GARDEN  
THE LIST



PUBLICATIONS



2019

2020

2021

2023



## PUBLICATIONS

[ENGLISH STYLE INSPIRED 300 M2 APARTMENT IN MOSCOW ↗](#)

[DAY WITH AIYA LISOVA AND MERCEDES-BENZ ↗](#)

[APARTMENT FOR A YOUNG MAN IN MOSCOW ↗](#)

[PROJECTS IN HISTORICAL BUILDINGS: EXPERT OPINION ↗](#)

[АТМОСФЕРНАЯ КВАРТИРА В СТАРОМ ДОМЕ НА МАРОСЕЙКЕ ↗](#)

[TOP-10 OFFICES IN RUSSIA 2020 ↗](#)

[MODERN APARTMENT FOR A FAMILY WITH TWO KIDS ↗](#)

[AIYA BUREAU LOFT OFFICE IN MOSCOW ↗](#)

[NEW AIYA BUREAU OFFICE IN MOSCOW CITY CENTER ↗](#)

[AMAZING ARCHITECTURE – APARTMENT IN SOCHI ↗](#)

[AMAZING ARCHITECTURE – CHALET IN THE MOUNTAINS ↗](#)

[AMAZING ARCHITECTURE – RESIDENCE WITH SPA ↗](#)

[AMAZING ARCHITECTURE – PENTHOUSE IN THE CITY CENTER ↗](#)

[DWELL – 300M2 APARTMENT IN MOSCOW WITH ENGLISH ACCENTS ↗](#)

[DWELL – AIYA BUREAU OFFICE ↗](#)

[TWO-STORY APARTMENT IN THE CITY CENTER ↗](#)

[DWELL – APARTMENT WITH GLASS CUBE ↗](#)

[ARCHELLO – SEASIDE APARTMENT ↗](#)

[ARCHELLO – PENTHOUSE WITH PANORAMIC VIEW ↗](#)

[ARCHELLO – FAMILY RESIDENCE ↗](#)

[ARCHELLO – CHALET IN THE MOUNTAINS ↗](#)



## DESIGN COMMUNITY

AIYA bureau is very passionate about education and knowledge sharing, which creates a community of designers and architects – together we improve our skills and make the world a better, more functional and prosperous place. We created the AIYA class educational platform, where everyone can take various courses and webinars from SMM in design and project photography to project management and economics and know-how of creating the design bureau.

OUR EDUCATIONAL PROJECT  
[AIYADESIGNCLASS.RU](https://aiyadesignclass.ru) ↗





## CONFERENCE AND COURSE SPEAKERS



MOSBUILD



ARCH DIALOG

**АРХ МОСКВА**

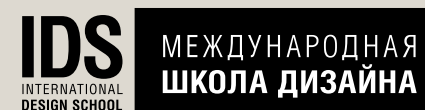
ARCH MOSCOW

**британская  
высшая школа  
дизайна**

BRITISH HIGHER  
SCHOOL OF DESIGN

**Skillbox**

SKILLBOX



INTERNATIONAL  
SCHOOL OF DESIGN



A—CLASS® HOUSES



# PORTFOLIO

ARCHITECTURE AND INTERIORS,  
TURN-KEY REALISATION

- 01 ARCHITECTURE: VILLAS AND HOUSES
- 02 TURNKEY APARTMENTS
- 03 RENOVATION: APARTMENTS IN HISTORICAL BUILDINGS
- 04 DE LUXE APARTMENT FURNISHING
- 05 B2B PROJECTS FOR DEVELOPERS
- 06 OFFICES AND EXHIBITIONS



# ARCHITECTURE: VILLAS AND HOUSES 01

- 01 RESIDENCE WITH SPA
- 02 TOWNHOUSE WITH GARDEN IN LONDON
- 03 FAMILY RESIDENCE NEAR MOSCOW
- 04 MODERN CHALET IN THE MOUNTAINS
- 05 VILLA ON CYPRUS





## RESIDENCE WITH SPA

2022 920 M<sup>2</sup>

A spacious two-story house was built to accommodate a family of five – a couple and three children. It was important to create an intimate and cozy atmosphere for family rest, as well as to design private spaces for each family member.

The muted tones and natural materials in the finishes blend in harmoniously with the architecture of the house reminiscent of Frank Lloyd Wright's legendary villas.

Furniture, textures and materials are almost the same in every area. We have selected laconic and comfortable models from Minotti and Black Tie. The fireplace in the living room and the TV-area are decorated with porcelain stoneware. As a piece of art above the fireplace we chose an art mirror designed by Christophe Gagnon.





AIYA

## RESIDENCE WITH SPA

2022 920 M<sup>2</sup>



## RESIDENCE WITH SPA

2022 920 M<sup>2</sup>

Our clients travel a lot and are inspired by the European lifestyle. They wanted to bring Italian elegance to their home without bright elements.

The basis of the project are the neutral colours and the balance of lines and shapes. We used different types of marble, furniture from the world's best factories, and large-scale painting. A special role here is for Apparatus lamps, which we consider to be real pieces of art.

### PUBLICATIONS:

[AMAZING ARCHITECTURE](#) ↗

[ARCHELLO](#) ↗





RESIDENCE WITH SPA

2022 920 M²





AIYA

## RESIDENCE WITH SPA

2022 920 M<sup>2</sup>





AIYA

## RESIDENCE WITH SPA

2022 920 M<sup>2</sup>



## RESIDENCE WITH SPA

2022 920 M²

Architecture was developed by our partners – Portner Architects. Over 40 architects and engineers implementing private and commercial projects in Russia, France, Ukraine, Serbia and Azerbaijan for more than 15 years.



## TOWNHOUSE WITH GARDEN IN LONDON

2021 223 M<sup>2</sup>

For the townhouse we designed a modern interior, using traditional elements of Victorian houses – massive wooden window frames for bay windows and openings.

The space of the first floor combines comfortable living room with a fireplace, a chamber dining room and a kitchen.

A hidden gem of the townhouse is a quiet private garden where you can drink coffee in the morning and relax outdoors in the evening.





A I Y A

# TOWNHOUSE WITH GARDEN IN LONDON

2021 223 M<sup>2</sup>



AIYA

## TOWNHOUSE WITH GARDEN IN LONDON

2021 223 M<sup>2</sup>





## FAMILY RESIDENCE NEAR MOSCOW

2021 1700 M<sup>2</sup>

A spacious house for a family with children. The designers created interiors that are inseparable from the landscapes outside the window. The walls of the house are made of glass and it was very important for us to convey the beauty of the surrounding world, its colors, shades and textures, in finishing materials and fabrics, so that the house becomes the whole thing with nature.

We used natural wood, different types of stone, furniture and lighting from the best European designers, as well as the best modern technologies for the home.





AIYA

# FAMILY RESIDENCE NEAR MOSCOW

2021 1700 M<sup>2</sup>



AIYA

## FAMILY RESIDENCE NEAR MOSCOW

2021 1700 M<sup>2</sup>





A I Y A

# FAMILY RESIDENCE NEAR MOSCOW

2021 1700 M<sup>2</sup>







## MODERN CHALET IN THE MOUNTAINS

2021 120 M<sup>2</sup>

Soft leather, natural wood, fireplace - imagine this combination in the interior. We put them together to create a modern chalet in the mountains. Wooden beams on the ceiling give the space an intimacy and coziness.

This house dissolved in mountains and feels like a whole thing. In the living room the eye-catching saffrony staircase reflects the cozy fireplace, so you feel embraced by warmth and comfort. The fireplace can be seen both from living room and from library. Bringing together aesthetics, beauty and comfort, this interior combines ecological materials and high-end technologies for upscale functionality.

**PUBLICATIONS:**  
[AMAZING ARCHITECTURE](#) ↗  
[ARCHELLO](#) ↗





AIYA

## MODERN CHALET IN THE MOUNTAINS

2021 120 M<sup>2</sup>



AIYA

## MODERN CHALET IN THE MOUNTAINS

2021 120 M<sup>2</sup>





## VILLA ON CYPRUS

2020 300 M<sup>2</sup>

The architects and designers wanted to emphasise the warm atmosphere of a beach villa for family holidays. They used colours and textures reminiscent of the nature of the Mediterranean - voluminous spaces filled with air, natural light, plants and natural materials.

The combination of panoramic windows, concrete and stone, wood and plants, wicker furniture and spectacular lamps set the mood of this open space.

On different levels of the ground floor there is a kitchen, a spacious living room and a hall, from where you can climb up a futuristic staircase hanging in the air on thin cables.





A I Y A

## VILLA ON CYPRUS

2020 300 M<sup>2</sup>





AIYA

## VILLA ON CYPRUS

2020 300 M<sup>2</sup>





# TURN-KEY APARTMENTS 02

- 01 PENTHOUSE WITH PANORAMIC CITY VIEW
- 02 APARTMENT IN DUBAI
- 03 APARTMENT IN MOSCOW
- 04 TWO-STORY APARTMENT WITH TERRACE



## PENTHOUSE WITH PANORAMIC CITY VIEW

2022 190 M<sup>2</sup>

Important advantages of this penthouse, located on the 41st floor, are panoramic windows with 360 views and ceilings 5.2 meters high.

The architects designed the space with a spacious kitchen-dining room, a living room with a TV zone, a master suite with a dressing room and a spacious bathroom, an office, a gym.

Designers collectible furniture and unique artworks creates a gallery-like ambience.

**PUBLICATIONS:**  
[AMAZING ARCHITECTURE](#) ↗  
[ARCHELLO](#) ↗





# PENTHOUSE WITH PANORAMIC CITY VIEW

2022 190 M<sup>2</sup>



AIYA

## PENTHOUSE WITH PANORAMIC CITY VIEW

2022 190 M<sup>2</sup>





AIYA

## PENTHOUSE WITH PANORAMIC CITY VIEW

2022 190 M<sup>2</sup>

37 TURN-KEY APARTMENTS



PROJECTS



## APARTMENT IN DUBAI

2022 145 M<sup>2</sup>

Most of the apartments in Dubai are white box with ready-made basic light finishes. Such projects require a careful approach in the choice of furniture, textiles, decor, accessories and art in order to turn a neutral interior into a cozy space that reflects the personality of its owners.

We decorated the tranquil base with designer furniture, bright art and ethnic details – Moroccan carpets, mirrors, chairs from local brands and a lot of plants.





AIYA

## APARTMENT IN DUBAI

2022 145 M<sup>2</sup>





AIYA

## APARTMENT IN DUBAI

2022 145 M<sup>2</sup>





# APARTMENT IN MOSCOW

2021 300 M²

Aesthetics and function are equivalent for the owners of this apartment. Our customers traveled a lot around the world but lost their heart in Great Britain and wanted to have a London-inspired interior in their Moscow apartment. Designers chose textured stucco cornices, herringbone parquet, massive door portals and graphite window decoration which is the perfect base for modern Italian furniture, expressive lamps and art.

**PUBLICATIONS:**  
[INTERIOR+DESIGN](#) ↗  
[SALON](#) ↗  
[MYDECOR](#) ↗





AIYA

## APARTMENT IN MOSCOW

2021 300 M<sup>2</sup>



AIYA

## APARTMENT IN MOSCOW

2021 300 M<sup>2</sup>







## TWO-STORY APARTMENT WITH TERRACE

2021 200 M²

Our customers, a family with a teenage son, chose an apartment in a completely restored early XX century building in the center of Moscow. They are passionate about architecture and interior design and wanted to combine it all in their one-of-a-kind home dreamt up.

It was a design challenge for AIYA bureau to put together contemporary style, history, collectible furniture and vintage elements. One of the important architectural elements of the apartment is the spiral staircase, which has become an important compositional and semantic element of the space.

**PUBLICATIONS:**  
[INTERIOR+DESIGN](#) ↗  
[SALON](#) ↗





A I Y A

## TWO-STORY APARTMENT WITH TERRACE

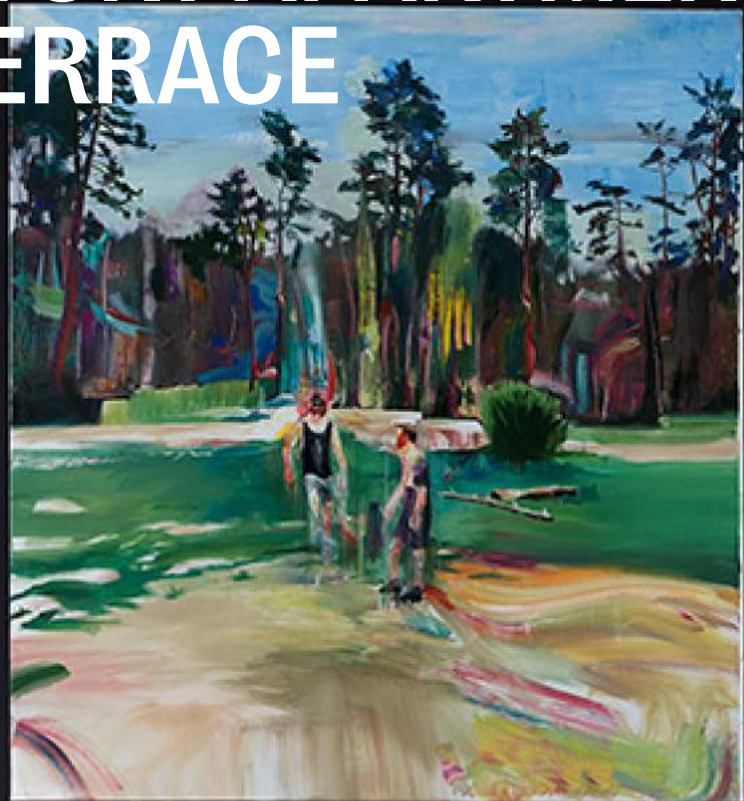
2021 200 M<sup>2</sup>



AIYA

## TWO-STORY APARTMENT WITH TERRACE

2021 200 M<sup>2</sup>





AIYA

## TWO-STORY APARTMENT WITH TERRACE

2021 200 M<sup>2</sup>



# ARCHITECTURAL RENOVATION IN HISTORICAL BUILDINGS 03

01 APARTMENT IN EARLY XX CENTURY BUILDING ON NIKITSKY BOULEVARD

02 APARTMENT IN HISTORICAL BUILDING ON OSTOZHENKA





## APARTMENT IN EARLY XX CENTURY BUILDING ON NIKITSKY BOULEVARD

2022 193 M<sup>2</sup>

The bureau has designed a conceptual space, combining elements of French classics, a contemporary understanding of comfort and a love for art.

Our customer dreamed of a home bar, which we placed in the living room, separating it with a pink-orange glass partition. The vintage bar counter with an aged mirror is the reminiscence of the bars in Milan, while the intricate wall painting emphasises the creative atmosphere. A combination of modern furniture, vintage and voluminous ceiling stucco gives this interior a special chic.





AIYA

APARTMENT IN  
EARLY XX CENTURY BUILDING  
ON NIKITSKY BOULEVARD

2022 193 M<sup>2</sup>



AIYA

APARTMENT IN  
EARLY XX CENTURY BUILDING  
ON NIKITSKY BOULEVARD

2022 193 M<sup>2</sup>





AIYA

# APARTMENT IN EARLY XX CENTURY BUILDING ON NIKITSKY BOULEVARD

2022 193 M<sup>2</sup>



AIYA

# APARTMENT IN EARLY XX CENTURY BUILDING ON NIKITSKY BOULEVARD

2022 193 M<sup>2</sup>





## APARTMENT IN HISTORICAL BUILDING ON OSTOZHENKA

2022 133 M<sup>2</sup>

Our customers lived in Scandinavia and love this laconic style. After coming back to Moscow, they bought an apartment in a pre-revolutionary house with plans to combine the atmosphere of an “old Moscow” apartment with northern conciseness.

During the process of architectural renovation we made the layout that met the modern needs of the family considering the architectural features of the interior.

We replaced all the floors in the apartment and restored the tiled stove which was previously located in the apartment.

We added 4 additional windows to provide stunning views on the alley and let more natural light inside.





AIYA

# APARTMENT IN HISTORICAL BUILDING ON OSTOZHENKA

2022 133 M<sup>2</sup>



AIYA

## APARTMENT IN HISTORICAL BUILDING ON OSTOZHENKA

2022 133 M<sup>2</sup>





# DE LUXE APARTMENT FURNISHING 04

## 01 APARTMENT IN KHAMOVNIKI



## APARTMENT IN KHAMOVNIKI

2021 96 M²

The AIYA Bureau team created individual solutions for the apartment with ready-made layout and white box finish. The owner of the apartment is a young man who appreciates comfort, practicality and functionality. We created comfortable areas for work, leisure and meetings with friends.

Our client collects art and together we completed his collection with minimalist works by Lithuanian photographer Antanas Sutkus and Belgian artist Rick de Bou. They reflect the individuality of the owner and emphasize the texture of the materials used in the interior.





AIYA

## APARTMENT IN KHAMOVNIKI

2021 96 M<sup>2</sup>



AIYA

## APARTMENT IN KHAMOVNIKI

2021 96 M²





# B2B PROJECTS FOR DEVELOPERS 05

01 SALES OFFICE / GRAND LOBBY FOR “INTONATION” RESIDENTIAL COMPLEX

02 SEASIDE APARTMENT COMPLEX



## SALES OFFICE / GRAND LOBBY FOR “INTONATION” RESIDENTIAL COMPLEX

2021 96 M<sup>2</sup>

The architects of the bureau have developed interiors for the sales office of the residential complex. Located on the ground floor, later the space will be transformed to the grand lobby.

The interior of the sales office matches with the architecture of a new residential complex in the north of the capital. Facades with laconic geometry are in natural shades – light grey, beige and golden.

Designing this interior we used the same colours and premium finishing materials – natural stone, wooden wall panels, glass partitions, laconic furniture and designers lamps.





AIYA

# SALES OFFICE / GRAND LOBBY FOR "INTONATION" RESIDENTIAL COMPLEX

2021 96 M<sup>2</sup>





AIYA

## SALES OFFICE / GRAND LOBBY FOR “INTONATION” RESIDENTIAL COMPLEX

2021 96 M<sup>2</sup>



## SEASIDE APARTMENT COMPLEX

2021 96 M<sup>2</sup>

The architects of the bureau has developed unique layouts and interior solutions for a small complex of premium residential apartments.

Seaside apartments are designed in neutral colors, simple lines and shapes. We choose interesting designer furniture, all necessary equipment and selection of decor and household items that can add individuality to each apartment.





AIYA

# SEASIDE APARTMENT COMPLEX

2021 96 M<sup>2</sup>





AIYA

# SEASIDE APARTMENT COMPLEX

2021 96 M<sup>2</sup>



AIYA

# SEASIDE APARTMENT COMPLEX

2021 96 M<sup>2</sup>



# OFFICES AND EXHIBITION SPACES 06

- 01 AIYA BUREAU OFFICE AT OSTOZHENKA
- 02 OFFICE AT ARTPLAY
- 03 FORMS OF SILENCE EXHIBITION



## AIYA BUREAU OFFICE AT OSTOZHENKA

2021 96 M²

The new office space in the center of Moscow has become a place for comfortable team work, meetings with clients and self-expression.

The office also works as an exhibition space for art, painting, graphics, sculpture and designer vintage furniture from the personal collection of Aya Lisova. Every detail matters and the collection is constantly updated and transformed.

White neutral walls are constructed over a historic walls that has been preserved along with the original herringbone parquet.





AIYA

# AIYA BUREAU OFFICE AT OSTOZHENKA

2021 96 M<sup>2</sup>



AIYA

# AIYA BUREAU OFFICE AT OSTOZHENKA

2021 96 M<sup>2</sup>





## OFFICE AT ARTPLAY

2019 140 M<sup>2</sup>

The office is located in a historic building with red brick walls and large windows on the site of the former Manometer factory built in 1886. It became an ideal place for a design bureau that works a lot with the historical architecture.

The walls of the building were perfectly preserved, the historical brick was cleaned and left open, and the partitions were made of glass and metal.

We furnished the office with a mix of Scandinavian laconic pieces, collectible design, vintage items, loft and modern details. Art plays the most important role here – in the meeting room there is an amazing work by Kirill Garshin.





AIYA

## OFFICE AT ARTPLAY

2019 140 M<sup>2</sup>





AIYA

## OFFICE AT ARTPLAY

2019 140 M<sup>2</sup>



# FORMS OF SILENCE EXHIBITION

2022

“Forms of Silence” is an exhibition project within the VIP and Cosmoscw parallel program, opened in September 2021 at the VCA space in Moscow. The solo exhibition presented the work of a young sculptor from Cape Town, Driaan Claassen.

The exhibition also presented the launch of a new project - art and collectible design gallery AIYA Collectible.

The concept of the exhibition was developed by Aya Lisova and produced by the bureau team.

Exhibition curator: art consultant Marina Gorbunova.

AIYA collectible x VCA  
 Формы Тишины: персональная выставка Дриаана Клаассена  
 Специальный проект в рамках VIP и Параллельной программы Cosmoscw, 2022

Оое величайшее вдохновение — это тишина. Есть что-то удивительное, когда тебя окружает тишина — это своего рода галлизатор, связывающий идеи и вдохновение» (Дриаан Клаассен).

дитативное и ориентированное на процесс создания творчество Дриаана Клаассена (Driaan Claassen) пронизано эхновением от общения с природой как неисчерпаемым источником осязаемых и прикладных форм. Художник активно выбирает визуальный словарь. Тонкая работа с материалом, будь то дерево, бронза, медь, пружинная сталь, оминий, и с формой объектов приглашает зрителя почти к тактильному взаимодействию и вызывает широкий ряд зоциаций.

эрический метод Дриаана заключается в работе с идеей нелинейных процессов, происходящих вокруг человека и гтри него через исследование, в том числе, различных религиозных практик и психоделитов. Его интересует поиск териальной формы для выражения нематериальной структуры, такой как мыслительный процесс, воспоминания, оции. Желание передать бесконечное богатство разума выражается в обращении к идее фрактала. Многие объекты в ироде обладают свойствами фрактала, например: побережья, облака, кроны деревьев, лист папоротника.

зонник выявляет подчеркнито простые фрагменты из сложной схемы любого "узора". Его скульптуры базовых форм зиде куба или сферы призваны стать символическим жестом укрощения и организации природы. Эту линию одолжают большие деревянные скульптуры, формы которых отсылают к хорошо считаваемым образам в природе, нновременно, они могут быть визуальным воплощением мыслительного процесса. «Многое из того, что я делаю, — это аздания сложности и двусмысленности. Я никогда не стремлюсь представить свою работу как какое-то решение, а зрее как гипотезы», — говорит скульптор.

пв за основу один элемент, Дриаан может не только его максимально упростить, но и трансформировать посредством зличения или самоповторения до получения прищудливей, извивающейся, зоморфной структуры. Такое зможности дает работа металлом. В этих скульптурах заложено стремление найти форму для материализации идеи осознания, желание отобразить и зафиксировать работу разума.

куство Дриаана также высокотехнологично: художник осваивает новые методы производства скульптуры, именяя свои знания в области 3D и используг 7-осевые фрезерные станки, что позволяет изготовить сложные рмы, которые невозможно сделать вручную. Применение различных технологий и техник работы с металлом, таких к литье, утраченный воск, холоднокатаный метод или метод экструзии (технология получения изделий путем одавливания вязкого расплава материала или густой пасты через формирующее отверстие) — является еще одним особом самовыражения автора. То есть формирование идеи и поиск способа ее реализации — это важный процесс, торый невозможно поставить на поток.

дход Клаассена дает ему время и пространство для того, чтобы доводить традиционные материалы до предела зможностей и ловно использовать визуальные приемы для воплощения задуманного. Так происходит преодоление зрыва между воображением и возможностью реализовать свои фантазии. «Как только вы поймете возможности пользования современных технологий, вам откроется совершенно новый способ взаимодействия с реальностью» иаан Клаассен).

AIYA collectible x VCA  
 Forms of Silence: A Solo Exhibition by Driaan Claassen  
 Special project as part of the Cosmoscw 2022 VIP and Parallel program

"My greatest inspiration is silence. There's something incredibly humbling when surrounded by silence. It's a catalyst that bonds ideas and inspiration" (Driaan Claassen).

Driaan Claassen's meditative and process-oriented creativity is infused with the inspiration gained from communicating with nature—an inexhaustible source of tangible and applicable forms. The artist carefully chooses his visual vocabulary. Equable work both with material, be it wood, bronze, copper, spring steel or aluminum and with the shape of objects invites the viewer to almost tactile interaction and evokes a wide range of associations.

Driaan's creative method lies in working with the idea of non-linear processes occurring around and within the human being. He owes so through research, including various religious practices and psychedelics. He is interested in finding a tangible form to express an intangible structure such as a thought process, memory, or emotion. The desire to convey the infinite richness of the miracle expressed by appealing to the idea of the fractal. Many objects in nature have fractal properties, for example, coasts, clouds, tree crowns, and fern leaves.

The artist highlights the simplest fragments in the complex schemes of any pattern. His sculptures of basic forms—a cube or a sphere—are intended as a symbolic gesture of taming and organizing nature. This line is further developed by large wooden sculptures whose forms refer to well-read images in nature, while at the same time they can be a visual embodiment of a thought process. "A lot of what I do is a calibration of this complexity and ambiguity. I never seek to present my work as some type of resolution but rather as hypotheses," says the sculptor.

Taking one element as a basis, Driaan can not only simplify it as much as possible but also transform it by enlarging or self-repeating to obtain a bizarre, writhing, zomorphic structure. Metalwork offers such possibilities. Inherent in these sculptures is the desire to find a form to materialize the idea of the subconscious, the desire to display and record the work of the mind.

Driaan's art is also high-tech. The artist is mastering new methods of sculpture production, applying his knowledge in 3D and using 7-axis milling machines, which allows for making complex forms that cannot be made by hand. The use of different technologies and techniques of working with metal, such as casting, lost wax, cold rolled method, or extrusion method—a technology of obtaining products by pushing a viscous melt or thick paste through a forming tube—is another way of the artist's self-expression. That is, the development of the idea and the search for a way to implement it is a single process that cannot be taken to the assembly line.

Claassen's approach gives him time and space to push traditional materials to their limits and discover new visual techniques to realize his ideas. This is how the gap between imagination and the possibility of realizing one's fantasies is bridged. "Once you understand the possibilities of using modern technology it opens up a whole new way to interact with reality" (Driaan Claassen).



AIYA

# FORMS OF SILENCE EXHIBITION

2022





AIYA

# FORMS OF SILENCE EXHIBITION

2022



OFFICES AND EXHIBITION SPACES



PROJECTS



# ART CONSULTING

- 01 CONSULTING AND COLLECTIONS MANAGEMENT
- 02 ART CHOICE FOR INTERIORS
- 03 VISITS TO GALLERIES, FITTING, ASSISTANCE IN PURCHASING
- 04 VISITING EXHIBITIONS AND ARTISTS' WORKSHOPS
- 05 TRIPS TO INTERNATIONAL EXHIBITIONS AND FAIRS
- 06 EXHIBITION ORGANISATION



## ART

Art is an integral part of our projects. We offer qualified and systematic selection of art for the interior, visits to artists' workshops and legal support in the purchase of pieces of art.

## AIYA COLLECTIBLE

In 2021, we launched our new AIYA Collectible project – art and collectible design gallery. We also held the first exhibition as part of the Forms of Silence project.





## PARTNER GALLERIES

**DIMORE**GALLERY

MILAN

Ro

MILAN

M . A . H

LONDON



CAPETOWN

ARTWIN GALLERY

MOSCOW / LONDON

BOOROOM GALLERY

MOSCOW

pop/off/art  
gallery

MOSCOW

LUMIERE  
GALLERY

MOSCOW

A N N  
N GALLERY A  
O V A

SAINT-PETERSBURG



# CONSULTING

- 01 REAL ESTATE CONSULTING (SKETCH, REDEVELOPMENT)
- 02 PRESALE HOME STAGING
- 03 CONSULTING ON ALL ISSUES OF DESIGN AND IMPLEMENTATION OF COMPLEX FACILITIES
- 04 BUDGETING AND SELECTION OF CONTRACTORS FOR DESIGN AND IMPLEMENTATION
- 05 ARCHITECTURAL RECONSTRUCTION CONSULTING
- 06 INVESTMENTS IN DESIGN AND REAL ESTATE
- 07 BUSINESS CONSULTING: OPENING AND DEVELOPING YOUR OWN STUDIO



AIY A

## CONTACTS

ADDRESS

CYPRUS, LIMASSOL, CHRISTODOULOU CHATZIPAVLOU, 223

EMAIL

HELLO@AIYABUREAU.COM

SOCIAL MEDIA

@AIYABUREAU

WEBSITE

[AIYABUREAU.COM](http://AIYABUREAU.COM)